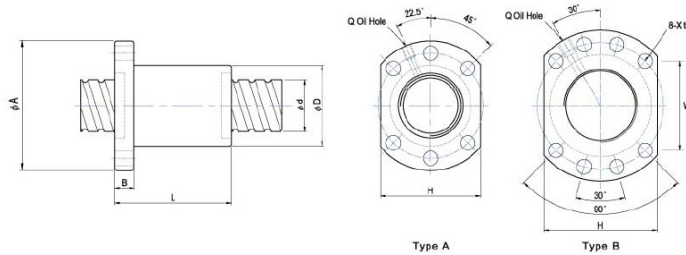


Viti e chiocciolate a ricircolazione di sfere

GTEN BALL SCREW TECHNOLOGY CO., LTD.

8.1 Type: FSU (DIN69051)

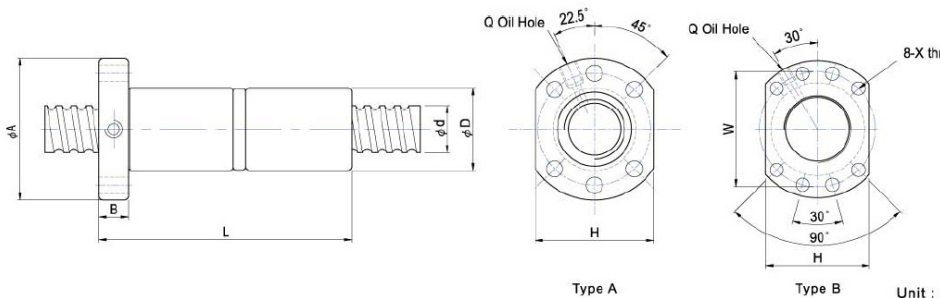


Unit : mm

Model No.	Dimensions															
	d	l	Da	D	A	B	L	W	X	Type	H	Q	n	Ca (Kgf)	Coa (Kgf)	K
1605-3	16	5	3.175	28	48	10	42	38	5.5	A	40	M6	3	765	1240	17
1605-4	16	5	3.175	28	48	10	50	38	5.5	A	40	M6	4	780	1790	17
1610-3	16	10	3.175	28	48	12	43.3	38	5.5	A	40	M6	3	716	1232	15
2005-4	20	5	3.175	36	58	10	53	47	6.6	A	44	M6	4	1100	2280	21
2505-4	25	5	3.175	40	62	10	53	51	6.6	A	48	M6	4	1250	3070	26
2510-4	25	10	4.762	40	62	12	85	51	6.6	A	48	M6	4	1944	3877	27
3205-4	32	5	3.175	50	80	12	53	65	9	A	62	M6	4	1400	4080	32
3210-3	32	10	6.35	50	80	16	74	65	9	A	62	M6	3	2605	5310	34
3210-4	32	10	6.35	50	80	16	90	65	9	A	62	M6	4	3390	7170	34
4005-4	40	5	3.175	63	93	16	56	78	9	B	70	M8	4	1575	5290	38
4010-4	40	10	6.35	63	93	18	93	78	9	B	70	M8	4	3850	9470	41
5010-4	50	10	6.35	75	110	18	93	93	11	B	85	M8	4	4390	12400	50
6310-4	63	10	6.35	90	125	18	98	108	11	B	95	M8	4	5070	16600	80
8010-4	80	10	6.35	105	145	20	98	125	13.5	B	110	M8	4	5620	21300	90

GTEN BALL SCREW TECHNOLOGY CO., LTD.

8.3 Type: FDU (DIN69051)



Unit : mm

Model No.	Dimensions															
	d	l	Da	D	A	B	L	W	X	Type	H	Q	n	Ca (Kgf)	Coa (Kgf)	K
1605-3	16	5	3.175	28	48	10	80	38	5.5	A	40	M6	3	780	1790	37
2005-4	20	5	3.175	36	58	12	92	47	6.6	A	44	M6	4	1100	2280	49
2505-4	25	5	3.175	40	62	12	92	51	6.6	A	48	M6	4	1250	3070	58
2510-4	25	10	4.762	40	62	12	153	51	6.6	A	48	M6	4	1944	3877	49
3205-4	32	5	3.175	50	80	12	92	65	9	A	62	M6	4	1400	4080	70
3210-4	32	10	6.35	50	80	16	160	65	9	A	62	M6	4	3390	7170	79
4005-4	40	5	3.175	63	93	15	96	78	9	B	70	M8	4	1575	5290	84
4010-4	40	10	6.35	63	93	18	162	78	9	B	70	M8	4	3850	9470	97
5010-4	50	10	6.35	75	110	16	162	93	11	B	85	M8	4	4390	12400	115
6310-4	63	10	6.35	105	145	20	182	125	13.5	B	110	M8	4	5620	21300	165
8010-4	80	10	6.35	105	145	20	182	125	13.5	B	110	M8	4	5620	21300	207

forniture per l'industria gelmini s.r.l.

Capitale Sociale 100.000 Euro Interamente versato

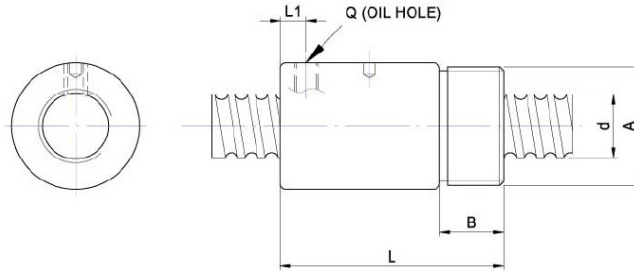
Sede: **43100 Parma** - Via Cerati, 3/A
Tel. 0521.993844 r.a. Fax 0521.291688

Filiale: **46040 Z.I. Guidizzolo** - Via Tiziano, 11
Tel. 0376.847123 Fax 0376.840319

http://www.fornituregelmini.it - e-mail: info@fornituregelmini.it
Cod.Fisc. e Part. IVA: 00785110347 - Cod. INTRASTAT: IT 00785110347

GTEN BALL SCREW TECHNOLOGY CO., LTD.

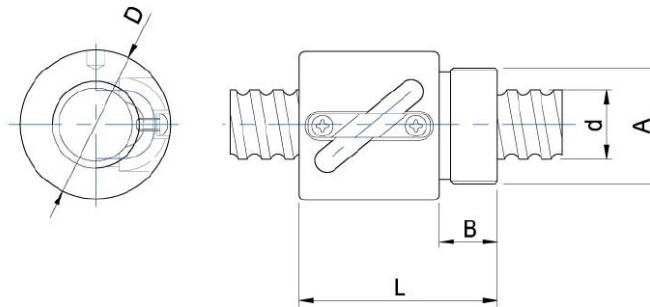
8.10 Type: RSU



Unit : mm

Model No.	Screw Size		Ball Dia.	Effective Turns circuit x row	Basic Rate Load (kgf)		Nut					
	O.D.	Lead			(1x10 ⁶ REV.) Ca (Dynamic)	Co (Static)	Dg6	L	B	A	L1	Q
1604-3	16	4	2.381	1x3	491	952	29	32	8	M22x1.5P	4	M5
1605-4	16	5	3.175	1x4	780	1790	32	56	16	M30x1.5P	6.5	M6
2005-4	20	5	3.175	1x4	1130	2380	38	59.5	16.5	M35x1.5P	7	M6
2505-4	25	5	3.175	1x4	1280	3110	42	60	17	M40x1.5P	7	M6
2510-4	25	10	4.762	1x4	1944	3877	42	90	17	M40x1.5P	10	M6
3205-4	32	5	3.175	1x4	1450	4150	52	60	19	M48x1.5P	7	M6
3210-4	32	10	6.35	1x4	3390	7170	52	93	19	M48x1.5P	12	M6
4005-4	40	5	3.175	1x4	1610	5330	58	59	19	M56x1.5P	6	M8
4010-4	40	10	6.35	1x4	3910	9520	65	102	27	M60x2P	12	M8
5010-4	50	10	6.35	1x4	4450	12500	78	104	29	M72x2P	12	M8

8.9 Type: RSW



Unit : mm

Model No.	Screw Size		Ball Dia.	Effective Turns circuit x row	Basic Rate Load (kgf)		Nut			
	O.D.	Lead			(1x10 ⁶ REV.) Ca (Dynamic)	Co (Static)	D	L	B	A
8x2.5	8	2.5	1.2	2.5X1	151	232	17.5	23.5	7.5	M15X1P
1003	10	3	1.8	2.5X1	235	357	21	29	9	M18X1P
1204	12	4	2.381	3.5X1	425	738	25.5	34	10	M20X1P
1205	12	5	2	3.5X1	662	1036	25.5	39	10	M20X1P
1605	16	5	3.175	2.5X1	716	1230	32.5	42	12	M26X1.5P

forniture per l'industria gelmini s.r.l.

Capitale Sociale 100.000 Euro Interamente versato

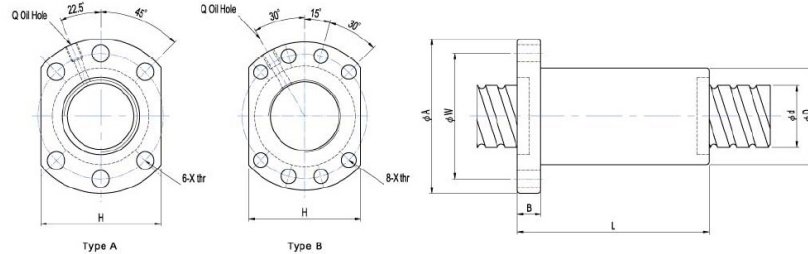
Sede:
43100 Parma - Via Cerati, 3/A
Tel. 0521.993844 r.a. Fax 0521.291688

Filiale:
46040 Z.I. Guidizzolo - Via Tiziano, 11
Tel. 0376.847123 Fax 0376.840319

http://www.fornituregelmini.it - e-mail: info@fornituregelmini.it
Cod.Fisc. e Part. IVA: 00785110347 - Cod. INTRASTAT: IT 00785110347

GTEN BALL SCREW TECHNOLOGY CO., LTD.

8.7 Type: FSC (DIN69051)



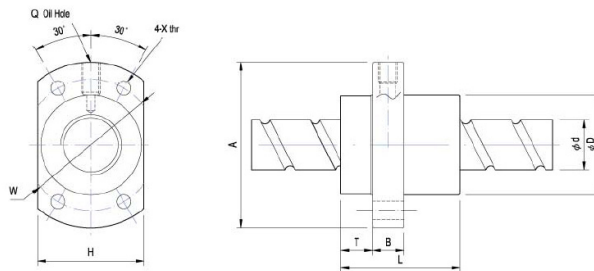
Unit : mm

Model No.	Dimensions															
	d	l	Da	D	A	B	L	W	X	Type	H	Q	n	Ca (Kgf)	Coa (Kgf)	
1605-4	16	5	3	28	48	12	34	38	5.5	A	40	M6	4	1255	1642	★
1610-3	16	10	3.175	28	48	12	43.3	38	5.5	A	40	M6	3	716	1232	
1616-3	16	16	3.175	28	48	12	61	38	5.5	A	40	M6	3	716	1232	
2005-4	20	5	3.175	36	58	10	53	47	6.6	A	44	M6	4	1459	2193	★
2505-4	25	5	3.175	40	62	10	53	51	6.6	A	48	M6	4	1622	2774	★
2510-4	25	10	3.5	40	62	12	64	51	6.6	A	48	M6	4	1854	3020	
3205-4	32	5	3.175	50	80	12	53	65	9	A	62	M6	4	2203	4080	★
3210-5	32	10	3.969	50	80	13	77	65	9	A	62	M6	5	3233	5947	
3220-3	32	20	3.969	50	80	13	78	65	9	A	62	M6	3	2009	3437	
4005-4	40	5	3.175	63	93	16	56	78	9	B	70	M8	4	2968	6538	★
4010-4	40	10	5.556	63	93	15	70	78	9	B	70	M8	4	4550	8400	
4020-3	40	20	5.556	63	93	15	83	78	9	B	70	M8	3	3866	6406	
5010-4	50	10	6.35	75	110	18	90	93	11	B	85	M8	4	8129	16983	
5020-5	50	20	6.35	75	110	18	121	93	11	B	85	M8	5	7721	15269	

Note: with sign ★ can produce left helix

GTEN BALL SCREW TECHNOLOGY CO., LTD.

8.8 Type: FSE



Unit : mm

Model No.	Dimensions															
	d	l	Da	D	A	B	T	L	W	X	H	Q	Ca (Kgf)	Coa (Kgf)	Circuit x Row	K
1616-2	16	16	3.175	32	53	10	10.5	45	42	4.5	38	M6	719	1429	1.8X2	9
2020-2	20	20	3.175	39	62	10	10.8	52	50	5.5	46	M6	780	2280	1.8X2	21
2525-2	25	25	3.969	47	74	12	11.2	64	60	6.6	56	M6	1230	3570	1.8X2	27
3232-2	32	32	4.762	58	92	15	14	80	74	9	68	M6	1760	5500	1.8X2	33
4040-2	40	40	6.35	73	114	17	17	95	93	11	84	M6	2870	9170	1.8X2	42